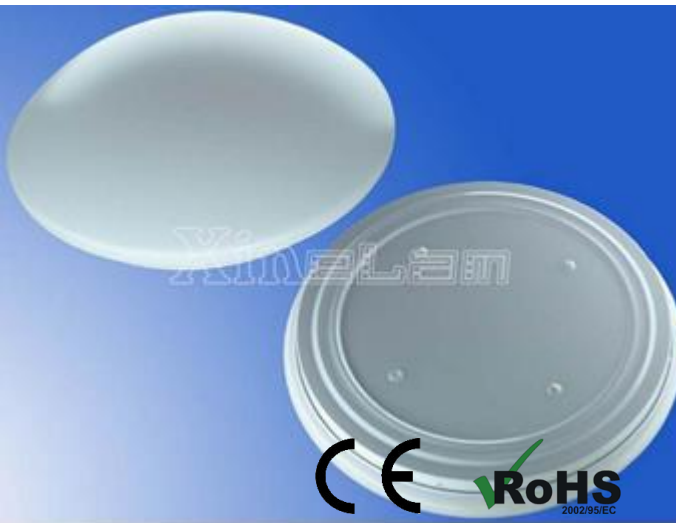


**Description:** Xinelam LED ceiling lights, using a unique design, No Visible Flicker - No Invisible - No Imperceptible Flicker\* to protect your eyes. Completely in accord with the connotation of green lighting, contains highly efficient energy-saving, environmental protection, safety, comfort, long-life. Specifically optimized design for solve the problem of Invisible or Imperceptible Flicker, Protect your eyes - No flicker!

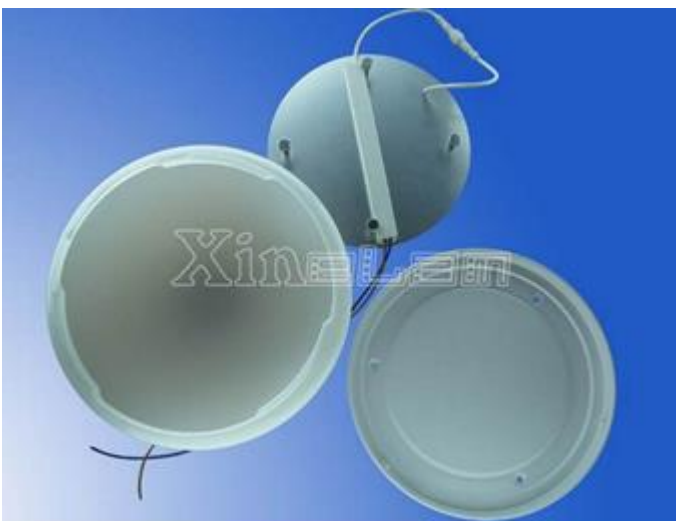


#### Features:

1. Unique optimized design, No flicker - Caring for your eyes
2. Waterproof LED light source: IP67
3. High efficiency, luminous efficiency of more than 85Lm / W
4. Long-life ultra-thin power supply, thickness 13.8mm
5. Real longlife:  $\geq 50000$ hours
6. Warranty: 3 years
7. FCC, CE, RoHS

#### Scope of application:

Apply to Hotel, bedroom, living room, restaurant, kitchen, foyer, hallway, balcony.



#### Electronical Specifications:

**Input:** AC90~265V 50/60Hz (more see table below)

**Power:** 11W, 12W, 16W, 20W, 26W, 40W

**Viewing angle:** 120° **luminous efficiency:**  $\geq 85$ Lm / W

**CRI:** Ra >75 (Selectable Ra >85)

**Available colors:** Warm White 2700~3200K,

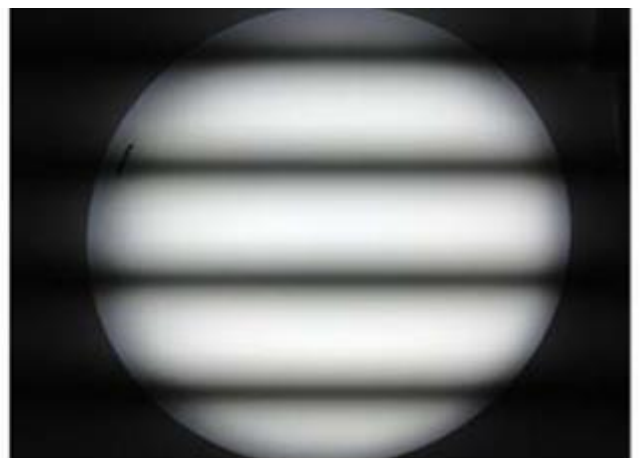
Neutral White 4200~4700K, Cool white 6000~6500K

#### Mechanical Specifications:

**Main Material:** Aluminum radiator, PC lampshade, high luminous efficiency LED, long life Ultra-thin power supply.

**Dimensions and weight:** see table below

**Temperature:** -20°C~50°C Storage Temperature -20°C~60°C



How to identify Invisible or Imperceptible Flicker:

The easiest way is: take out your camera or mobile phone with a camera function, close-up shots lamp light source, less than 30cm (high brightness point light source is required to use the lampshade diffusion cover), flicker the lamps will show blinds or appear regularly stripes; the no flicker lamps like a blank sheet of paper, not streaks.

The Invisible or Imperceptible flicker, can also affect human health, such as: The effects can range from headache to the decreased visual performance to non-specific malaise to the onset of some forms of epilepsy. [IEEE P1789](http://www.ieee.org)

RX-CFxx series commonly used size data sheet:

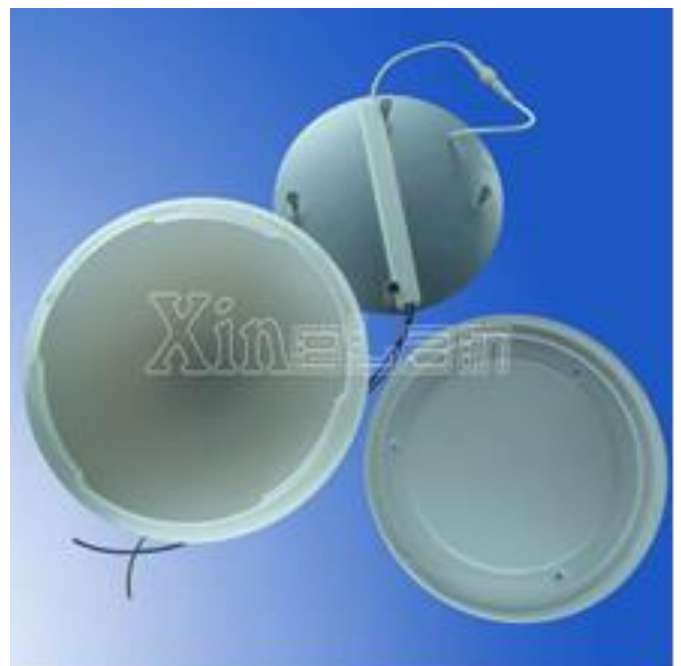
MODEL Power	Diameter	Luminous flux Lm	Temperature rise	Rated life Hours	TRIAC dimming	Input Power Factor	Illuminance Equivalent fluorescent lights	Comment
RX-CF-D22 22CM PANEL 12W	Φ300mm H:90mm	1020Lm	<20 °C	50000	No	AC 90~265V PF >0.9	24W	Iron shell; With strong magnetic stud  No flicker
RX-CF-D26 26CM PANEL 16W	Φ350mm H:95mm	1360Lm	<20 °C	50000	No	AC 90~265V PF >0.9	32W	
RX-CF-D30 30CM PANEL 20W	Φ420mm H:100mm	1700Lm	<20 °C	50000	No	AC 90~265V PF >0.5	40W	
RX-CFB-D22 22CM PANEL 12W	Φ300mm H:110mm	1020Lm	<20 °C	50000	No	AC 90~265V PF >0.9	24W	Aluminum housing, better cooling!  No flicker
RX-CFB-D26 26CM PANEL 16W	Φ350mm H:120mm	1360Lm	<20 °C	50000	No	AC 90~265V PF >0.9	32W	
RX-CFB-D30 30CM PANEL 26W	Φ420mm H:125mm	2210Lm	<20 °C	50000	No	AC 90~265V PF >0.9	52W	

The above table data testing at room temperature is 25 °C, test voltage AC230V 50Hz; LED color temperature 6000-6500K, CRI: > 75  
※Rated life: 70%Lumen maintenance at Ta25° C

Welcome to purchase the waterproof LED ceiling source and ultra-thin power! Replace Ceiling Light-Light Sources

Tolerance range for optical and electrical data: ±10 %.

Note: Warm White 2700~3200K, Neutral White 4200~4700K, brightness is reduced by 5%. If the selected CRI 85, 10% decrease in brightness.



RX-CF-D22 Φ300mm H:90mm  
RX-CF-D26 Φ350mm H:95mm  
RX-CF-D30 Φ420mm H:100mm



RX-CFB-D22  $\Phi$ 300mm H:110mm

RX-CFB-D26  $\Phi$ 350mm H:120mm

RX-CFB-D30  $\Phi$ 420mm H:125mm

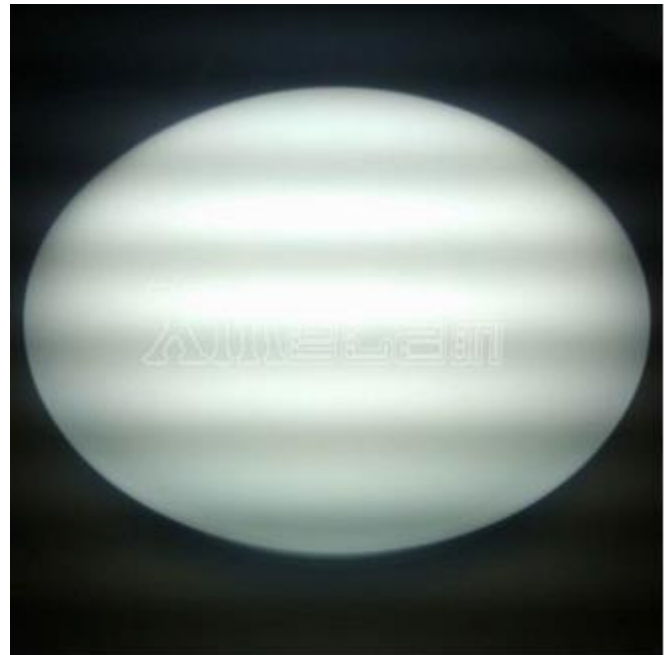
### Three unique advantages:

1. No flicker - Now marketed lighting , 90% with Invisible or Imperceptible Flicker hazards.  
Specifically optimized design for solve the problem of Invisible or Imperceptible Flicker



100% No flicker  
Protect your eyes

VS

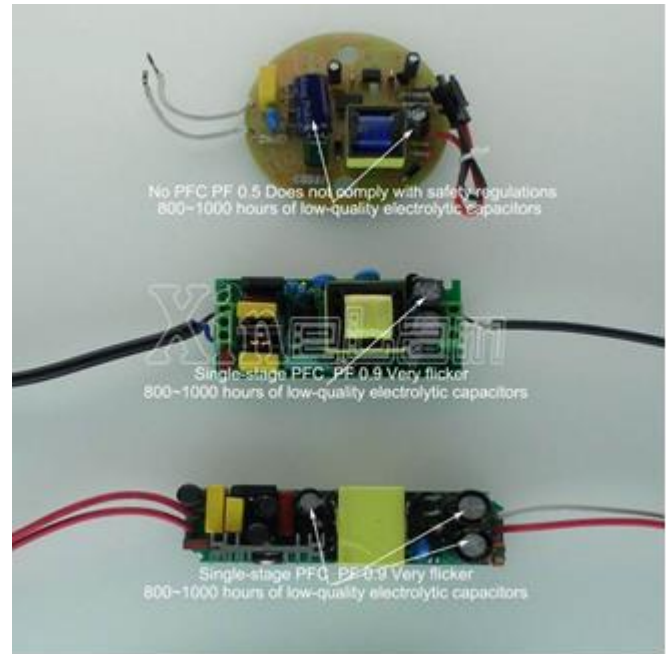


Invisible or Imperceptible flicker  
May cause headaches, eyestrain, myopia !

2. Capacitance of the top international long life, the life expectancy is 10 times the ordinary electrolytic capacitor.



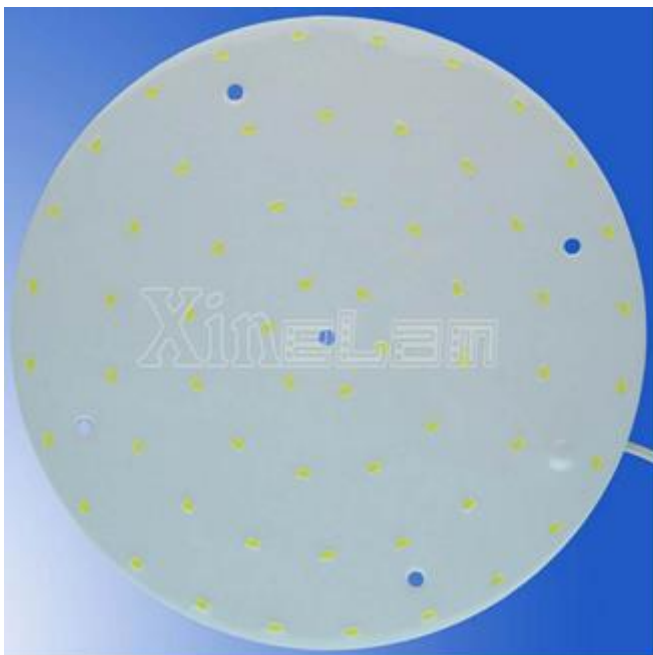
VS



Ultra-thin LED power driver, thickness 13.8mm  
 PF > 0.9 No 100/120Hz Flicker  
 Rubycon 105°C long life capacitors of 10000 hours,  
 10 times longer than ordinary life electrolytic capacitors.

No PFC or Single-stage PFC circuit  
 PF > 0.9 No Very Flicker  
 Ordinary electrolytic capacitor life is 800 ~ 1000 hours

3. Waterproof round LED panel light-emitting uniform, Central point without dark areas



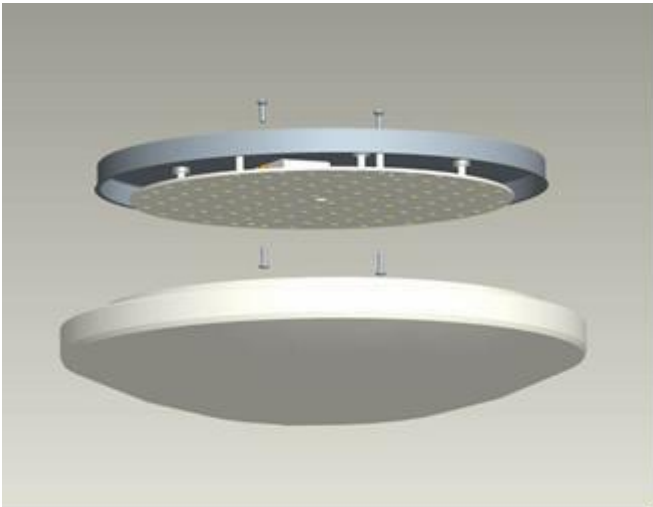
VS



IP67 waterproof treatment  
 full Aluminum substrate cooling module

Low prices, poor cooling effect  
 lamps center of the dark area.

## Connection diagram



### Installation:

1. Disconnect power to the fixture at source. DO NOT SIMPLY SWITCH OFF FIXTURE.
2. Ensure you are working with standard Fluorescent Light fixture. Note: your fixture may have more than 1 tube light and may/may not have a starter
3. Unpack the LED Tube Light:  
Unpack and carefully examine product  
Do not use the product if it is damaged
4. Open the fixture housing. Cut wire and remove the ballast. Remove the starter if exists  
Re-connect the Hot (L) wire to one end and Neutral (N) wire to the other end
5. Check to ensure wiring is done correctly then close the fixture housing
6. Affix warning labels to fixtures near socket so they are visible to tube light installers
7. Re-connect power to the fixture and turn on switch. The LED Tube Light will light

### Note:

1. Cut off the power before installation to ensure the switch in the closed state, to prevent electric shock.
2. To avoid the installation of the heat source and hot steam, corrosive gas, so as not to affect the life span.
3. This product is limited to indoor use, outdoor water-proof, please note
4. Is not compatible with traditional dimming, can not use dimmers(Indicate TRIAC dimming except)
5. Mounting location before installation to ensure that products can withstand the weight. Avoid high-altitude drop, hard object collisions, percussion.

### Warning Description:

Open the product should immediately check the product after packaging is intact. Appear artificial or statement within the specified requirements caused by the failure, retreat retailers or directly return to factory replacement. Such as long-term disabled should be stored in cool, dry, clean environment, prohibit the humid, hot, or flammable places of storage and use. Not disassemble, replace the device. This product is not waterproof. Product improvements or other reasons due to parameter change without notice.