

RX-GW45-3330330H-KD Medicinal Plants LED Grow Light Module: Provides wide wavelength from UV to FR (395nm~730nm) with high PAR output - PPF/0.5m=505 μ mol/m²/s, which is ideal for medical plants growth. Choosing RX-GW45-3330330H-KD will be a great solution for grow tents and basements 420 cultivation.

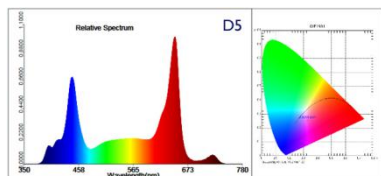


1. For medicinal plants happy cultivation in grow tents and basements.
2. Patent Number: ZL201620887642.
3. Lens + Reflector Cup, providing 100% higher efficiency and 50% uniform lighting.
4. High PAR output, PPF>800 μ mol at 0.35m.
5. Fanless design with low temperature rise and safer operation.
6. Suitable for stages of vegetation, bloom and harvest.
7. MEANWELL HBG LED driver, providing 50,000hrs long lifetime (Ta \leq 25°C).
8. Voltage: AC100~240V, Power: 120W, Waterproof: IP65, PF>0.9.
9. CE RoHS FCC.

Model	Dimension	Peak Wavelength	PPFD μ mol/m ² /s	Luminous Flux Radiation Power	Power Input	Comment
RX-GW45-3330330H-KD	330×330×61mm	D5	1200/0.3m 44000Lx	Flux 5394Lm Fe 31W	120W AC230V	For stages of vegetation, bloom and harvest
			505/0.5m 20266Lx			
			280/0.7m 11175Lx			

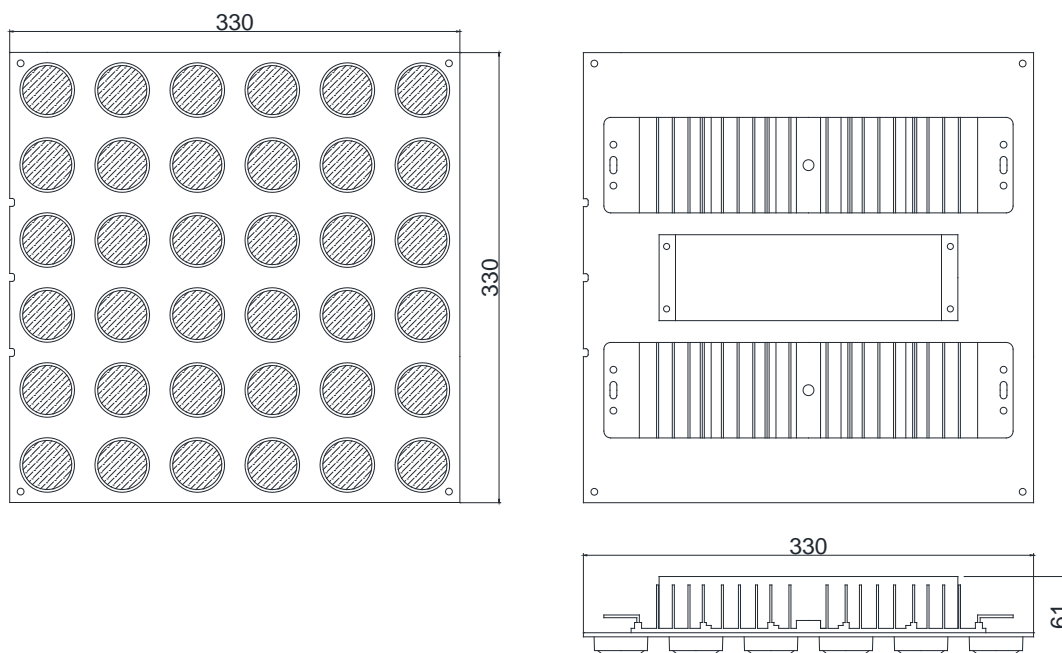
Surface Temperature Rise: Tc33K; Operating Temperature: -30°C~40°C; Lifetime: 50,000 hrs (Ta \leq 25°C)
Tolerance range for optical and electrical data: \pm 10%.
Recommended Irradiation Distance: 0.2~0.7m. Suitable for 16"×16", 24"×24" and 32"×32" grow tents.

Whole kit includes: LED module, MEANWELL LED driver, mounting screws, and hanging wire rope kit.



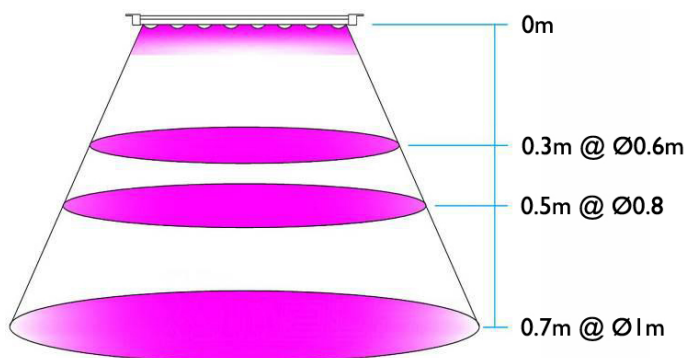
RX-GW45-3330330H-KD-D5 Provides wide wavelength from UV to FR with high PAR output, which has been extensively tested and is 100% effective against medicinal plants. **D5 spectrum** has the biggest contribution for plants and ideal for increasing the CBD & THC. Choosing RX-GW45-3330330H-KD-D5 will be the best solution for grow tents and basements 420 cultivation.

Dimension:

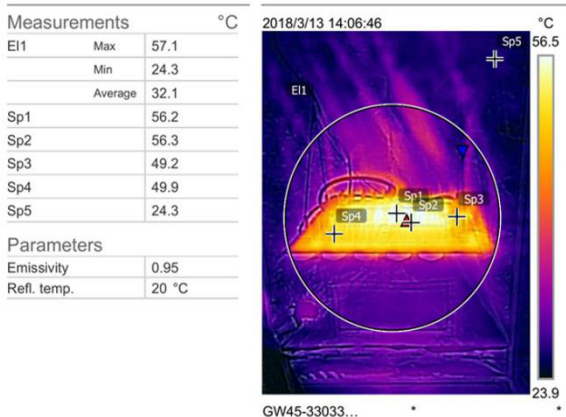


UNIT: mm

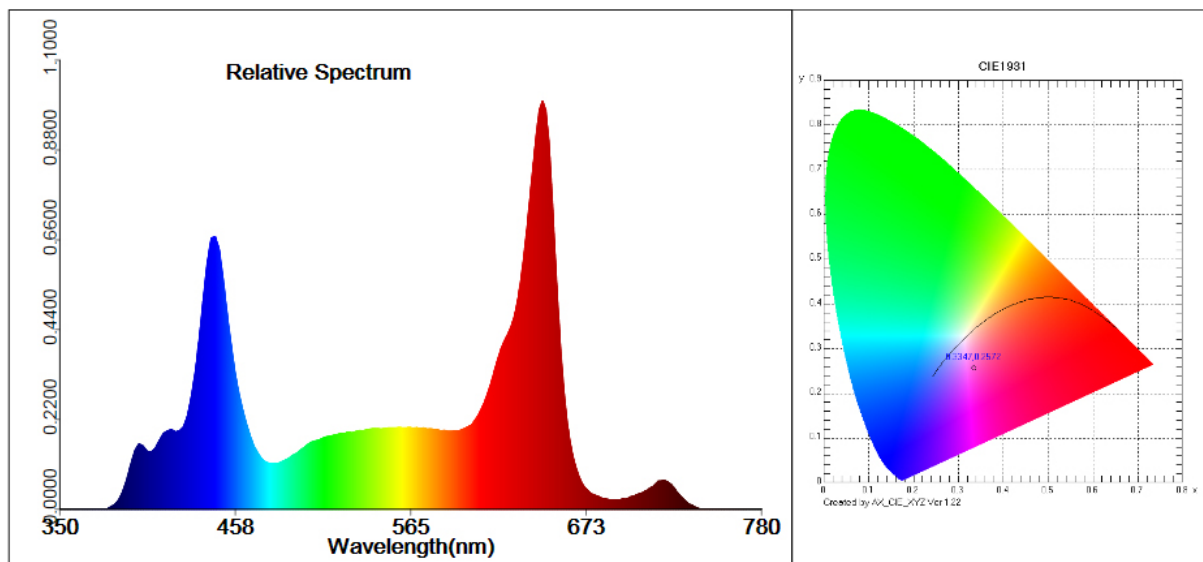
Depth Distance & Coverage:



Temperature Rise Test Report:



RX-GW45-330330H PPFD (0.5m) Test:



Test parameter:

E= 20266.9 lx	E(fc)=1883.55 fc		
CIE x= 0.3347	CIE y= 0.2572	CIE u'=0.2472	CIE v'=0.4273
Tc=5193 K	Lp=660.0 nm	HW=26.5 nm	Ld=610.2 nm
Pur=22.9 %	Ratio_R=25.9 %	Ratio_G=67.9 %	Ratio_B=6.2 %
Duv=-0.05231			
Ra=52.2	R1= 44	R2= 71	R3= 74
R4= 45	R5= 46	R6= 72	R7= 68
R8= -1	R9=-144	R10= 49	R11= 39
R12= 54	R13= 48	R14= 81	R15= 10

SDCM=43.4(F5000)
White Class:OUT

E1=107.71 W/m2	E2=112.09 W/m2	PPFD=505.62 μmol/(m·s)
Ech-A=23.567 W/m2	Ech-B=30.216 W/m2	Ef=2.8667 W/m2
Eb=34.73 W/m2	Ey=24.538 W/m2	Er=48.488 W/m2
Ep=93.692 Wphyto/m2	Erb_Ratio=1.3961	
PPFDf=1.7609E+001 μmol/(m2·s)		